

# **FACILITATING FUEL REDUCTION ACROSS LANDSCAPES: CULTIVATE PARTNER RESOURCES, INCREASE CAPACITY FOR PRIVATE LANDOWNER ENGAGEMENT**

Kara J Baylog

MSOW Coordinator – OSU Extension

John O'Connor

ODF Cohesive Wildfire Strategy Coordinator

March 27<sup>th</sup> 2018



# TODAY'S LANDSCAPE: THE STATUS QUO

- Natural disturbance regimes severely altered by human presence & WUI population growth
- Lack of natural/human-made disturbances = Heavy forest fuel build-ups + unchecked veg growth + conifer intrusions into unsuitable areas
- Checkerboard/mixed ownerships of public/private lands creates management challenges
- Ownership demographic shifts from knowledgeable industrial, to non-industrial with limited natural resource knowledge

**How do we initiate landscape scale wildfire preparedness among a diverse group of stakeholders?**



**FIRE  
THREATS**



**PERCEPTION**



**PERSPECTIVE**



**CULTURE**



**ADAPTATION**



# MY SOUTHERN OREGON WOODLANDS



## ■ **Three touch mailing**

- Reach out to woodland owners on a landscape, regardless of where they are in fire adaptation

## ■ **Tangible Offers that appeal across levels of interest**

- Free ODF forester Visit
- Fire Department Visit
- Localized Community Meeting
- Localized Forest Management Workshop
- OSU Extension Publication
- Peer Mentor Network

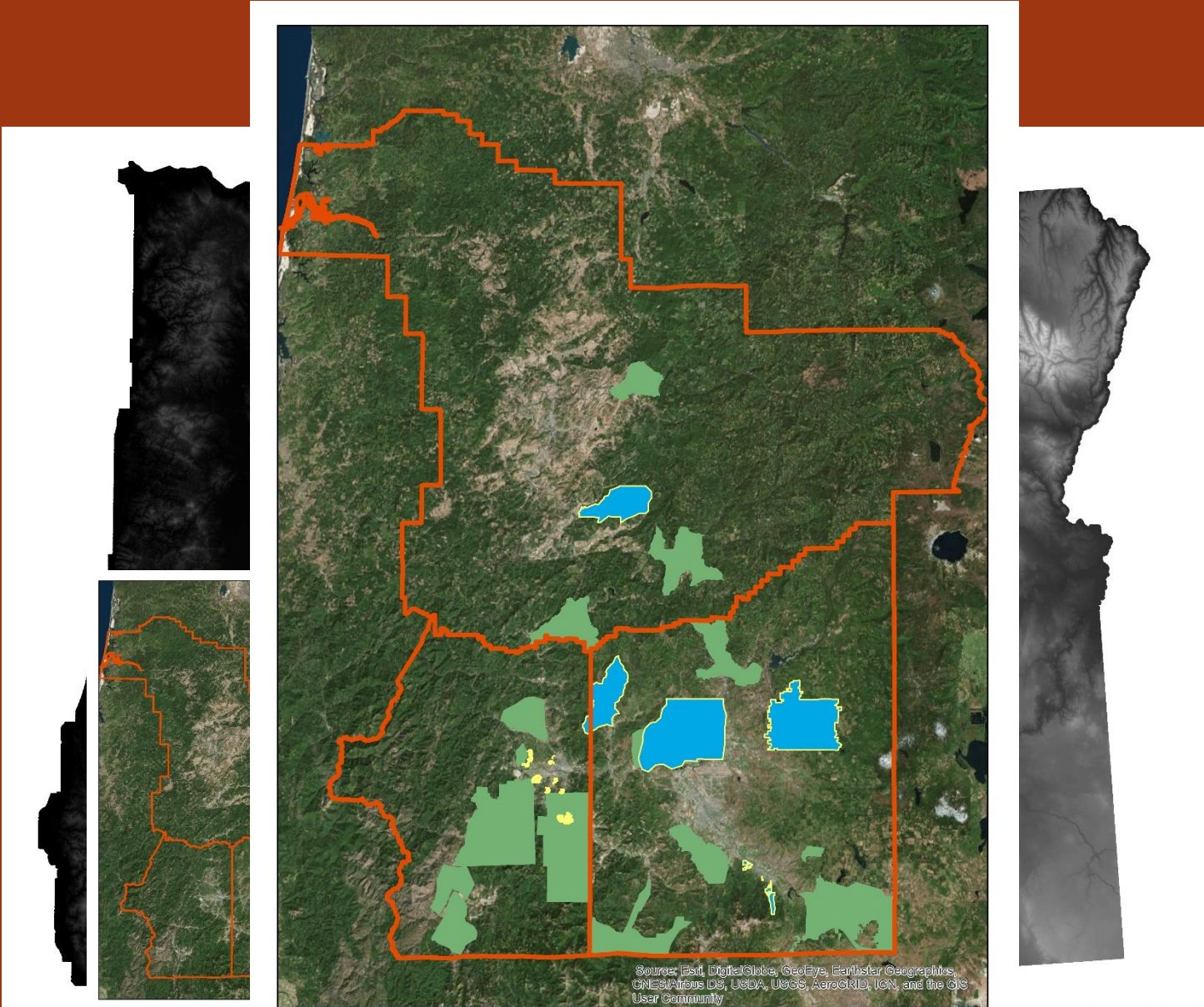




# HOW DO WE DO THIS? PARTNERSHIPS.



# TARGETING ONE LANDSCAPE AT A TIME

















# THANKS!

- Any Questions? Visit or Contact:
- [www.mysouthernoregonwoodlands.org](http://www.mysouthernoregonwoodlands.org)

Kara Baylog  
MSOW Coordinator

[info@mysouthernoregonwoodlands.org](mailto:info@mysouthernoregonwoodlands.org)

541-776-7371

John O'Connor  
Cohesive Wildfire Strategy Coordinator, ODF Medford

[John.P.O'connor@Oregon.gov](mailto:John.P.O'connor@Oregon.gov)

Max Bennett  
Forestry Agent OSU Extension  
[Max.Bennett@oregonstate.edu](mailto:Max.Bennett@oregonstate.edu)

