

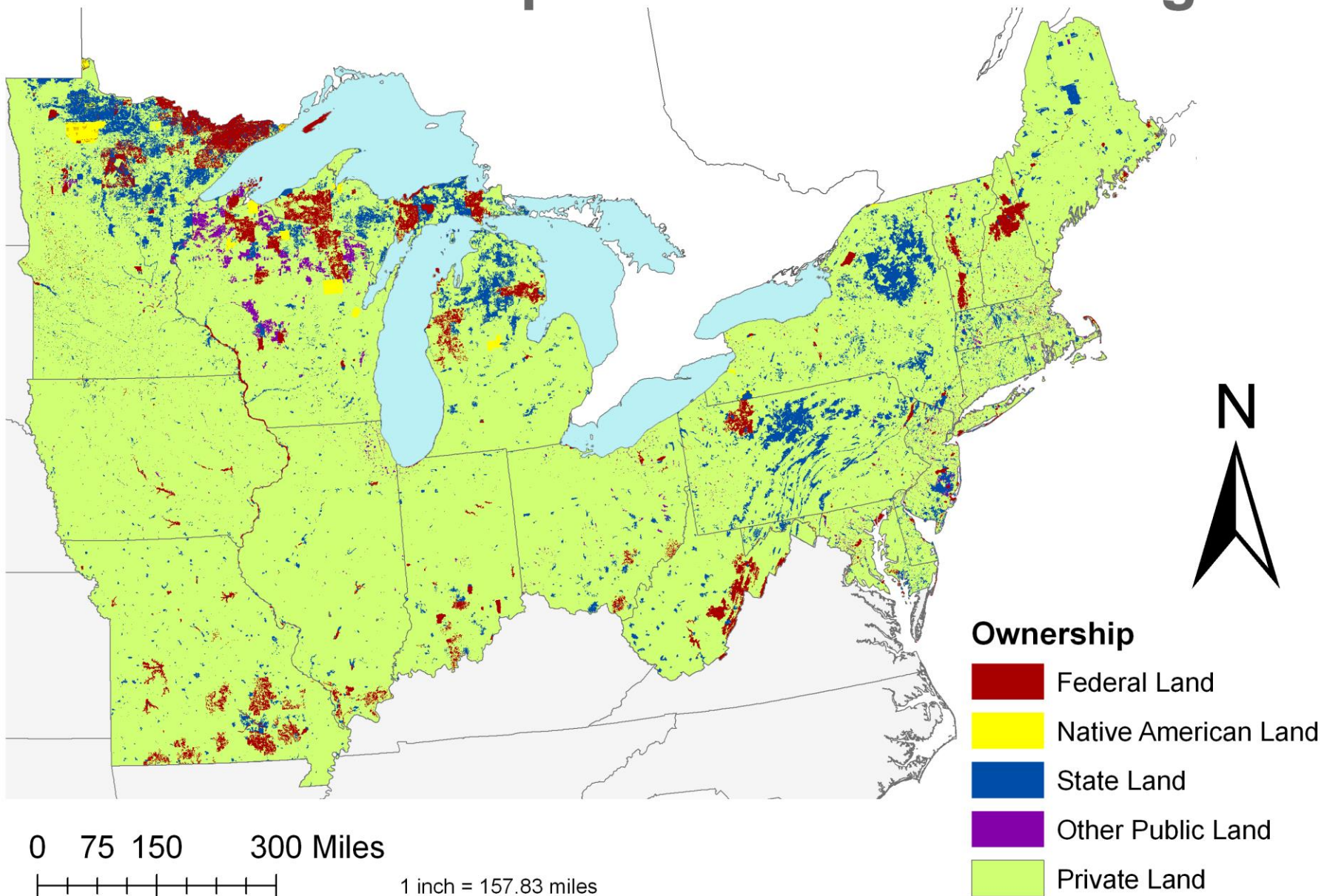
Northeast Regional Strategy Committee



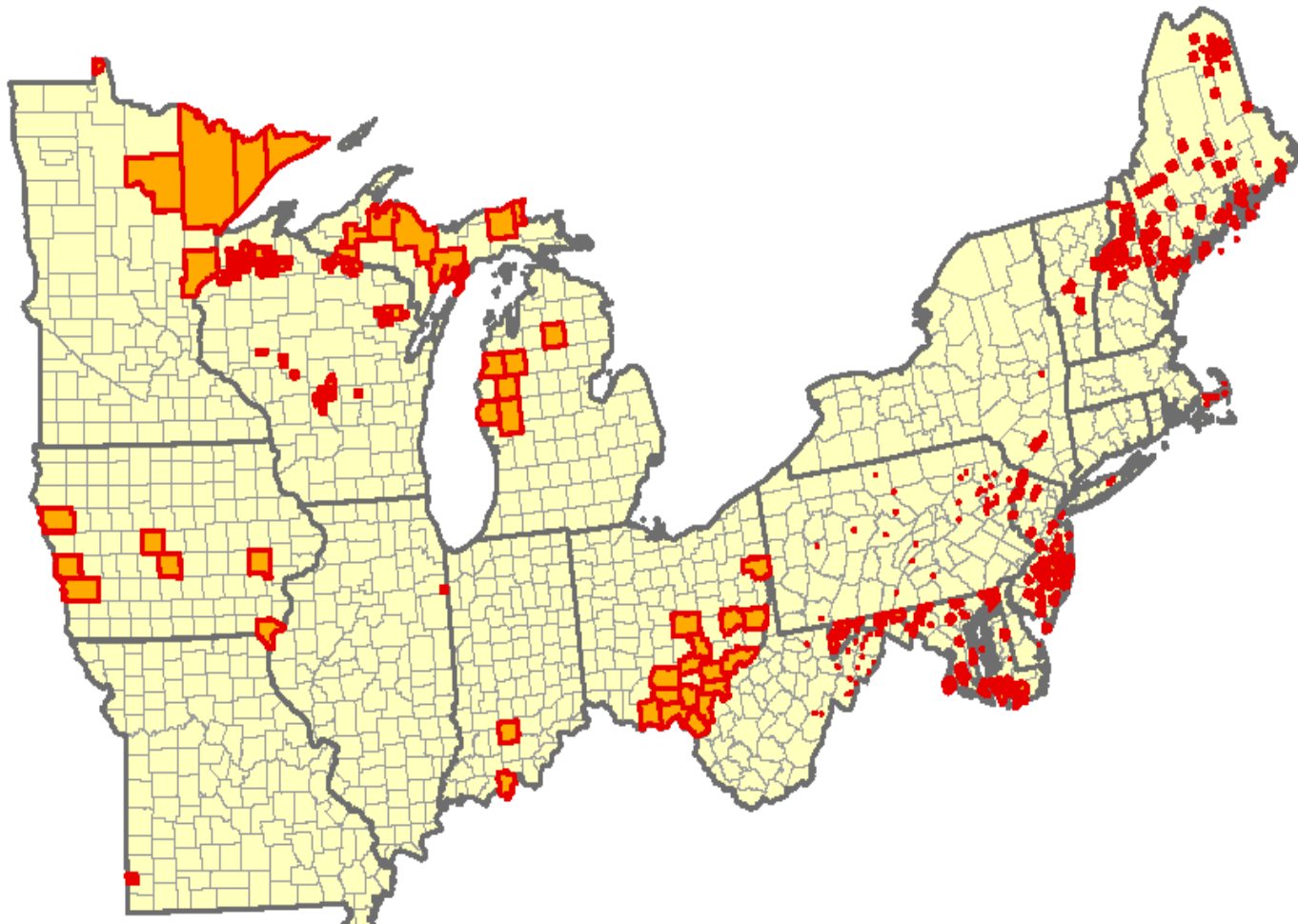


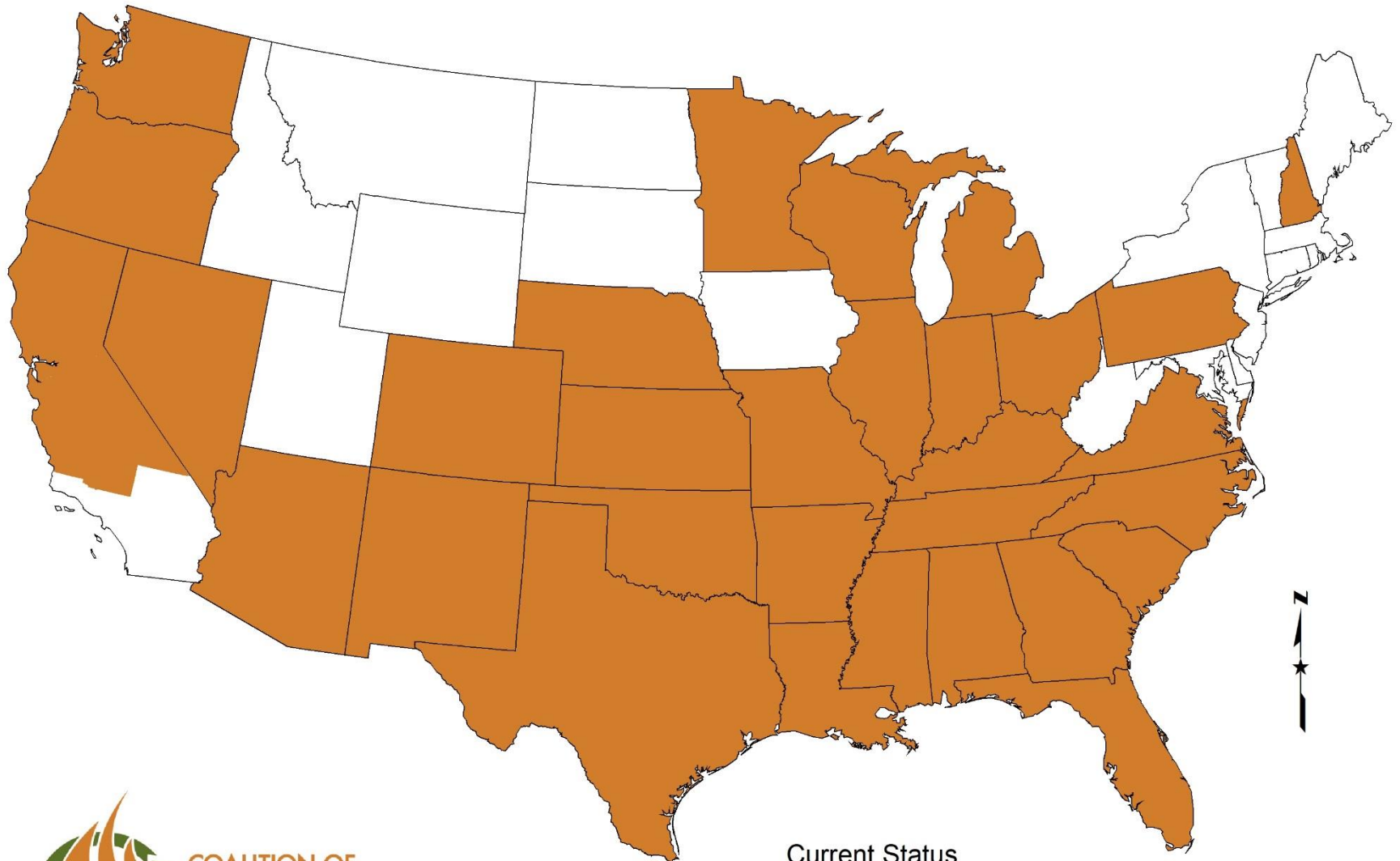
Reducing Fuels, Restoring Landscapes and Protecting Communities in the Northeast and Midwest

Land Ownership in the Northeast Region



Community Wildfire Protection Planning


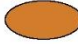




COALITION OF
**PRESCRIBED
FIRE COUNCILS, INC.**

www.prescribedfire.net

Current Status

-  No Current Status
-  Established
-  Developing

Use all the Tools in the Toolbox



- Outreach Programs
- Biomass Production
- Agency Grants and Authorities
- Cost share programs
- Learning Networks
- Agreements
- Plans



Private Property Chestnut RX - MOF

34 acres of private

1579 acres of USFS

Wyden agreement for
access, and potential for
burning of the pvt land

Long history of access
and prescriptive rights
issues with this
inholding

4,100' in elevation

Snowed on Friday
burned on Monday &
Tuesday



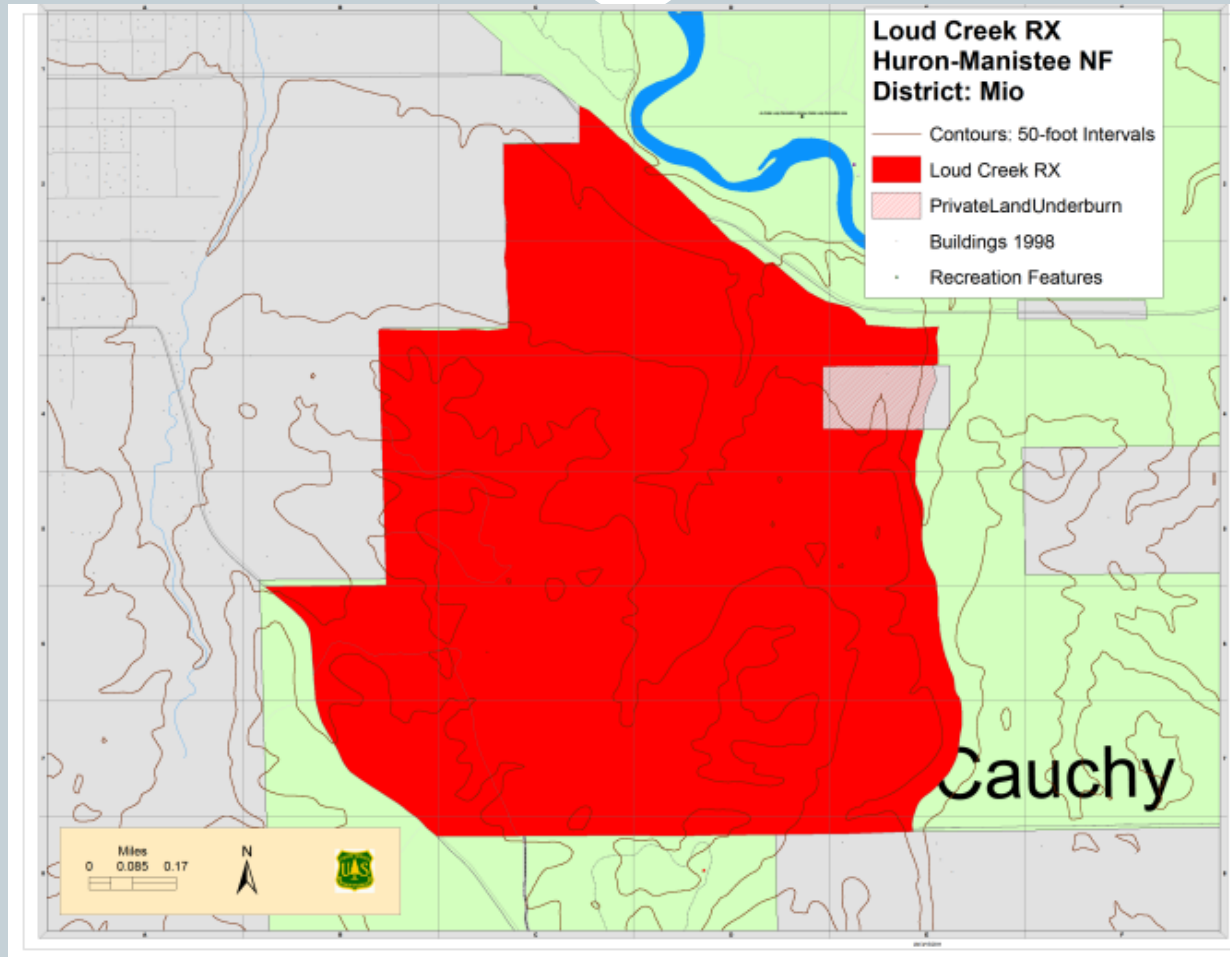
Difficult to Exclude the Private from the Project



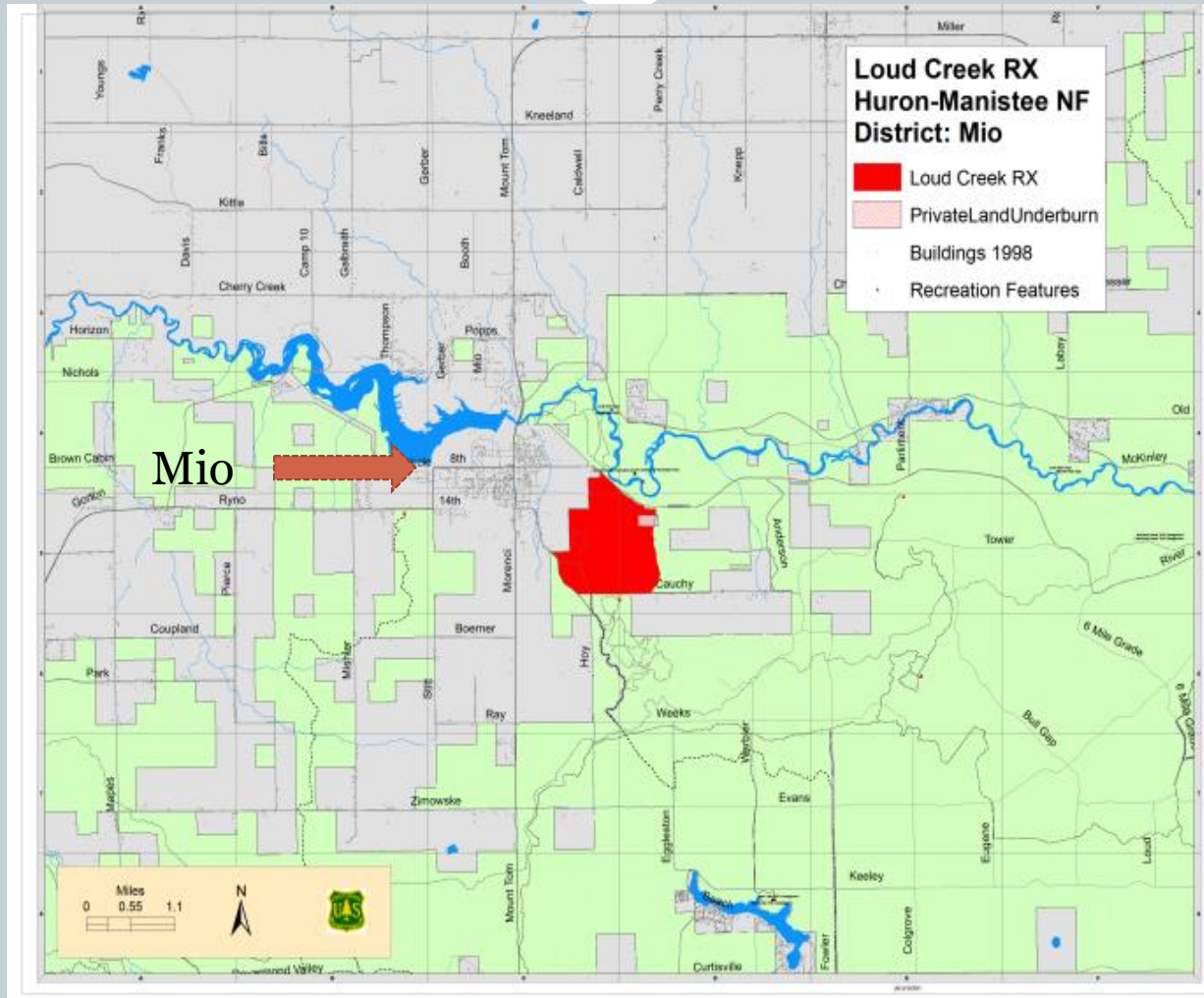
1st Aerial Ignition For MOF 4/10/17



Huron-Manistee NF - Loud Creek RX



Town of Mio Borders the RX Burn



6 Years From Start of Planning to Ignition

**Owners Onsite, 17 ac
Inholding W/Structures**

**Jack Pine, Red Pine &
Hardwood Forest Types**



Trying to Move Past the Era of Tiny RX burns

**Moving Towards
Landscape Level Burning**

**700+ Acres, Aerial
Ignition Used**



Cook County Managing Project/Funds



**County Working Direct
w/homeowners**

Community Acceptance



Superior NF – Mechanical PVT Treatments



Approx. \$1,500 Acre

Ladder Fuel Removal



Barnegat Township, NJ



Warren Grove Fire

Community of Brighton





LEARNING NETWORK



FIREWISE USA™
RESIDENTS REDUCING WILDFIRE RISKS



A way of doing business...



USFWS Regional Fire Planner Rick Vollick meets with partners to view the road clearing project. Photo credit: Catherine J. Hibbard/USFWS

- Framework for a culture of **“working better together”**
- Investment of time
- Fuel reduction in critical areas



Prescribed Fire Councils Working with Communities and Cooperators

Thomas Fielden
The Nature Conservancy
Missouri Chapter



Missouri Prescribed Fire Council

Promote and protect the responsible use of prescribed fire as a natural resource management tool in Missouri.

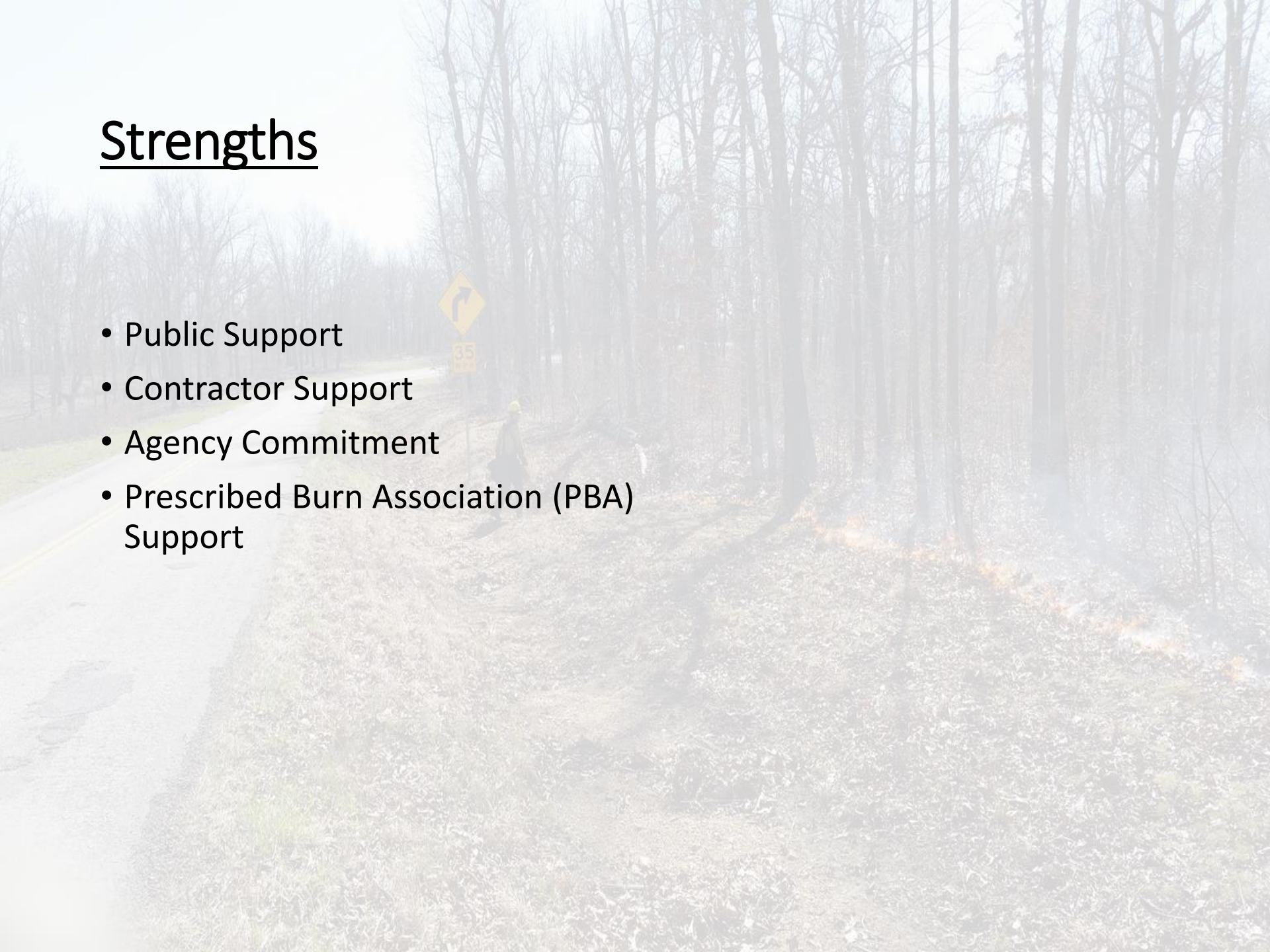


Challenges

- Direction
- Coordination
- Agency Restrictions
- Large Geographic Area

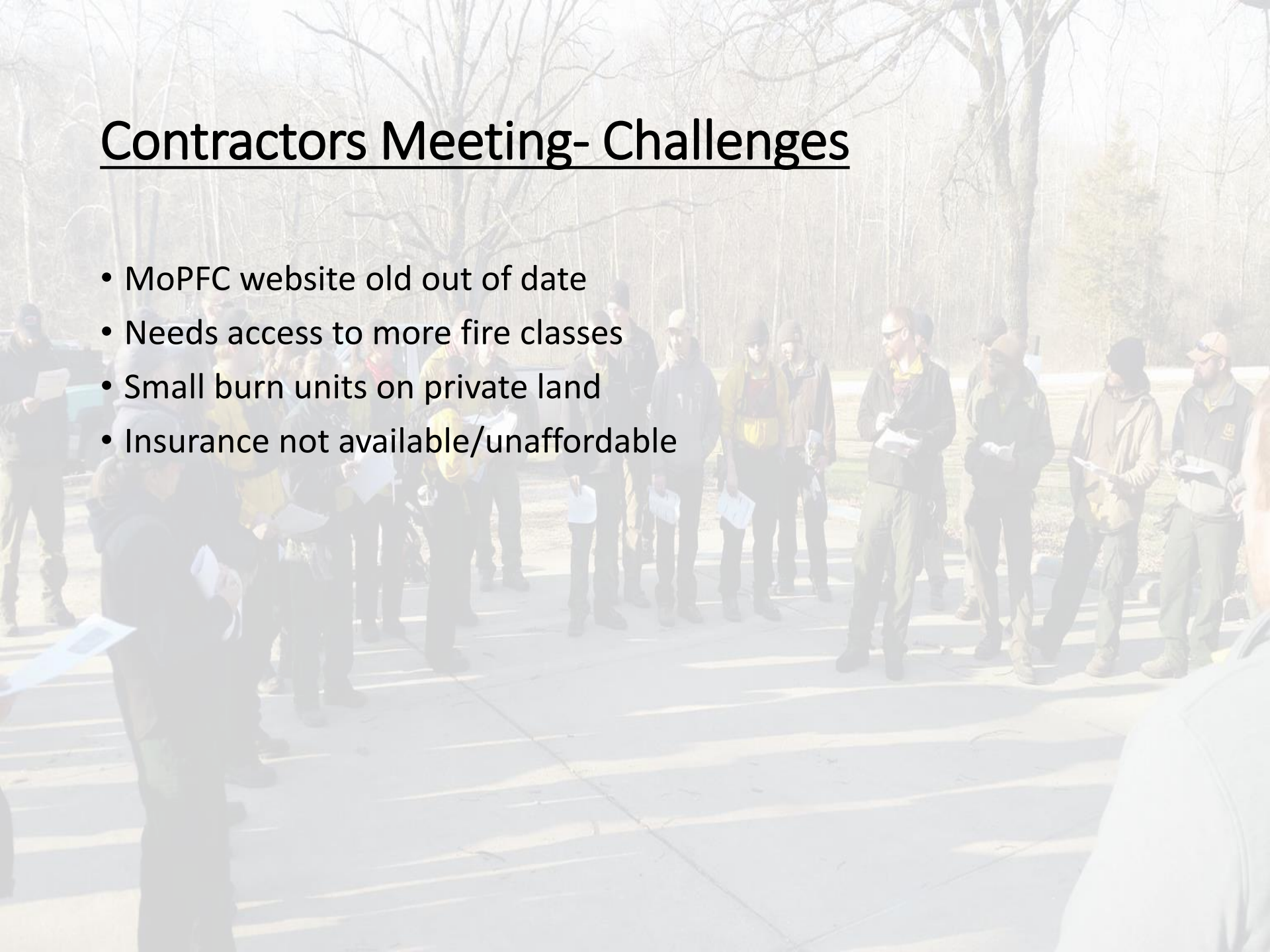
Strengths

- Public Support
- Contractor Support
- Agency Commitment
- Prescribed Burn Association (PBA) Support



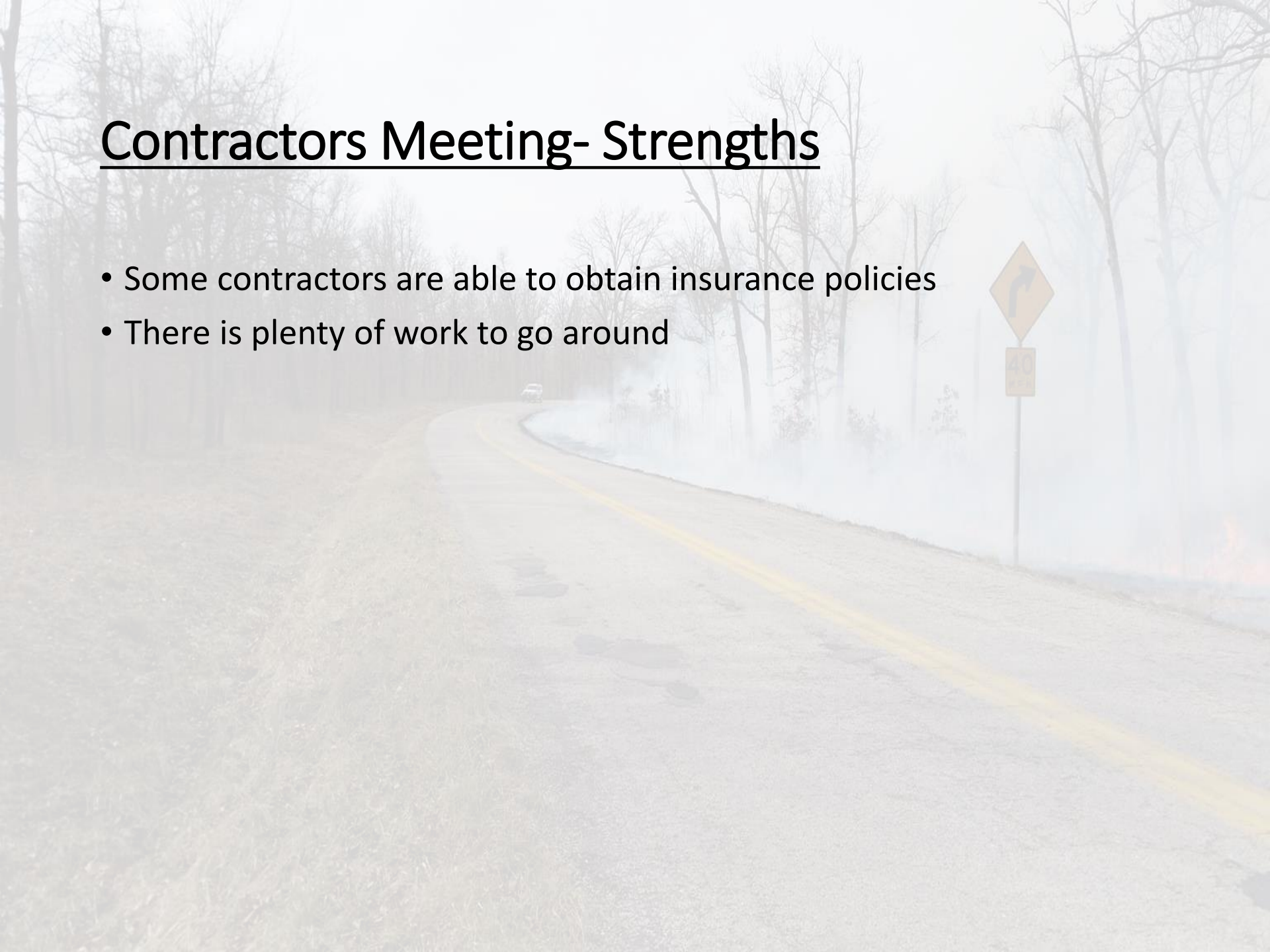
Contractors Meeting- Challenges

- MoPFC website old out of date
- Needs access to more fire classes
- Small burn units on private land
- Insurance not available/unaffordable

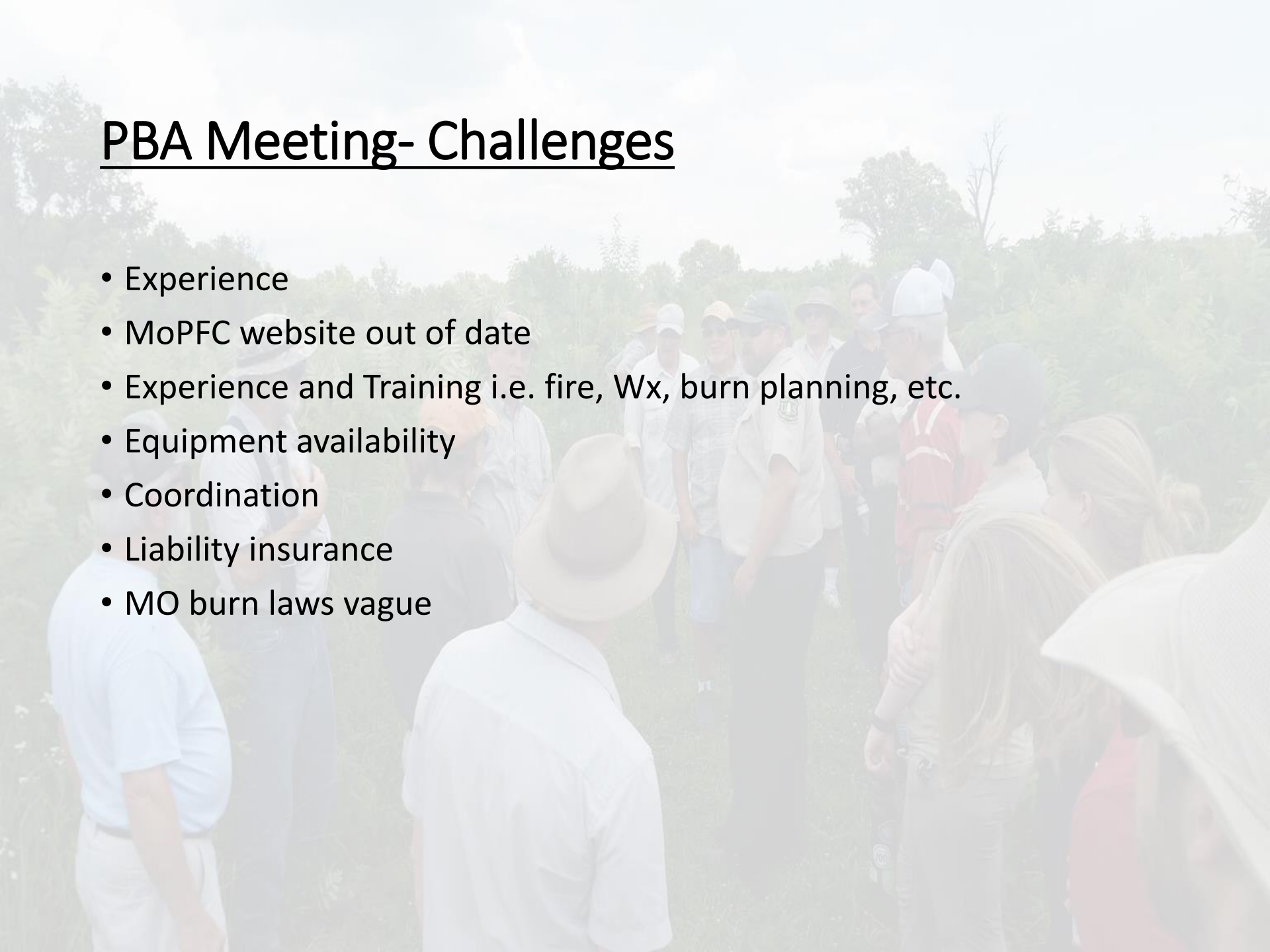


Contractors Meeting- Strengths

- Some contractors are able to obtain insurance policies
- There is plenty of work to go around

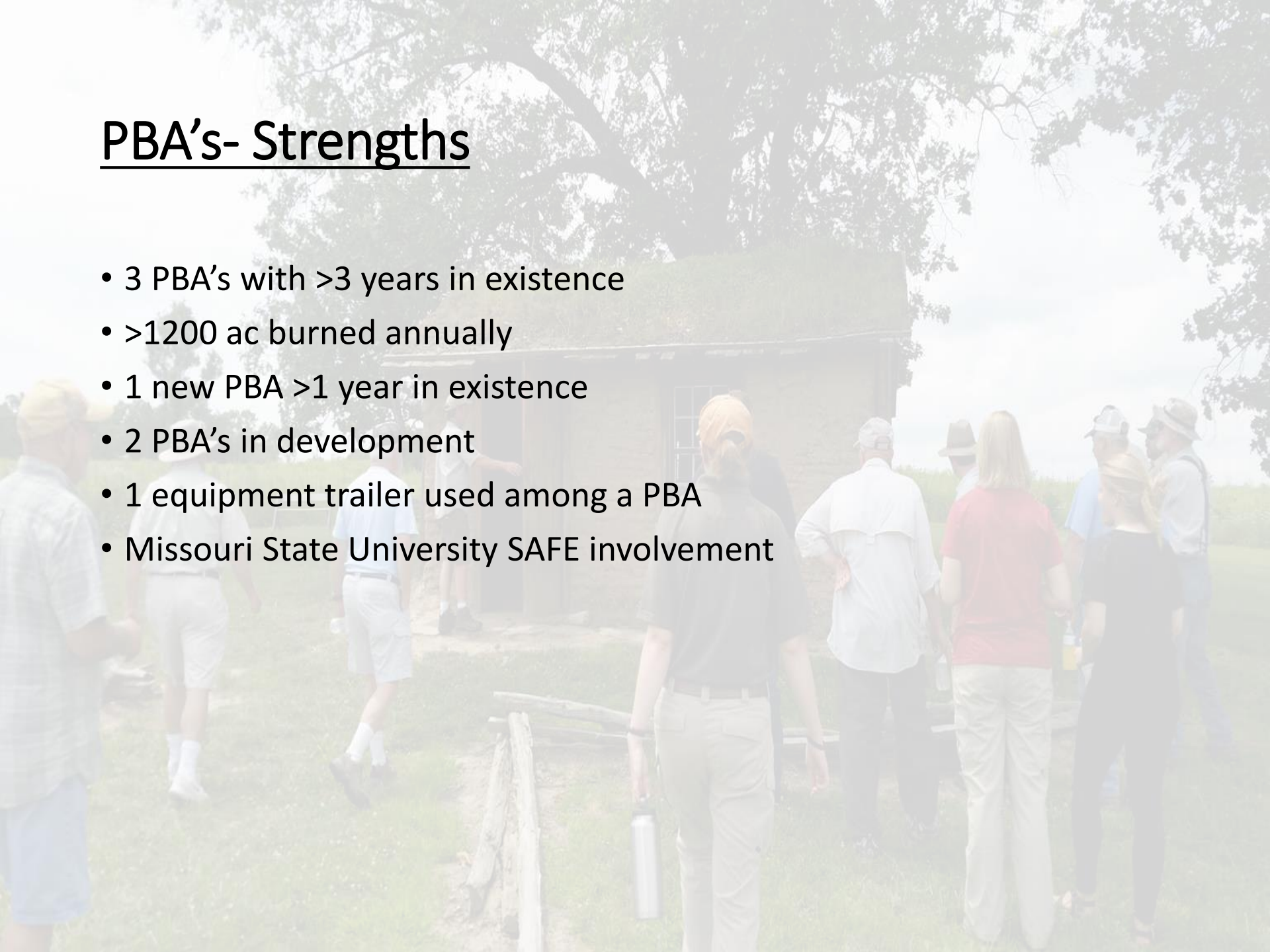


PBA Meeting- Challenges

- Experience
 - MoPFC website out of date
 - Experience and Training i.e. fire, Wx, burn planning, etc.
 - Equipment availability
 - Coordination
 - Liability insurance
 - MO burn laws vague
- 
- A group of approximately 15-20 people are gathered in a grassy field, likely for a training or meeting session. Many individuals are wearing light-colored shirts and various types of hats, including wide-brimmed sun hats and hard hats. The background shows a line of trees under a bright, slightly overcast sky. The overall scene suggests an outdoor field training or a site visit.

PBA's- Strengths

- 3 PBA's with >3 years in existence
- >1200 ac burned annually
- 1 new PBA >1 year in existence
- 2 PBA's in development
- 1 equipment trailer used among a PBA
- Missouri State University SAFE involvement



What did the MoPFC do?

- Updated our webpage with training, Wx, contractors, etc...
- Committed to a training session with annual meeting and workshop
- Committed to add PBA member to executive committee
- Committed to add contractors rep to executive committee
- Federal and State agencies willing to enter into Rx Burn agreements where lands boarder private
- USFS State and Private lands work with PBA's on equipment grants
- <http://moprescribedfire.org/>

MoPFC- Where do we go from here?

- Work with legislators to strengthen burn laws
- Seek funding for and hire coordinator position
- Continue to evaluate the needs of our members and supporters

QUESTIONS?



Massachusetts Forest Fire Control and Forestry Hazard Fuels Management



Massachusetts Bureau of Forest Fire Control



DCR

Bureau of Forest Fire Control and Forestry

Forest Fire Control Responsibilities

Providing aid and assistance in the prevention, detection and suppression of forest fires to cities and towns since 1911.

*****Local Fire Chief has jurisdiction over all fires, including STATE Lands.*****

Bureau of Forest Fire Control Services

- **State Wildfire Occurrence Reporting**
- **Fire Detection / Fire Tower Network**
- **Specialized Resource Response**
- **MEMA State Resource**
- **Federal Excess Property Program/VFA**
- **Wildfire Crew / National Mobilization**
- **Wildfire Training**
- **Fire Danger Rating / Fire Weather Intel**

Brief Fire History of Massachusetts

1887: Bourne, 25,000 acres

1927: Townsend State Forest into NH, 16,000 acres.

1927: Erving to Wendell, 7,000 acres

1927: Montague Plains Fire Destroys Village of Lake Pleasant

1923: Bourne, 25,000 acres, 7 days

1937: Bourne, 300 acres, 2 firefighters killed

1937: Hyannis, 2000 acres

1941: Marshfield, 550 buildings destroyed

1957: Plymouth, 15,000 acres, 3000 fought fire, which had a

35 mile perimeter

Wildfire crosses route 6 in Sandwich, during a large fire in May of 1965

1963: Plymouth, 530 acres

1964: Plymouth, 5500 acres, destroyed 26 buildings

1965: Sandwich, 5,000 acres

1966: Plymouth/Wareham 535 acres

1995: Russell, 1100 acres, Mt. Tekoa

2000: South Hadley, 310 acres, 14 days, Lithia Springs

2000: Erving, 140 acres, 7 days, Hermit Mountain

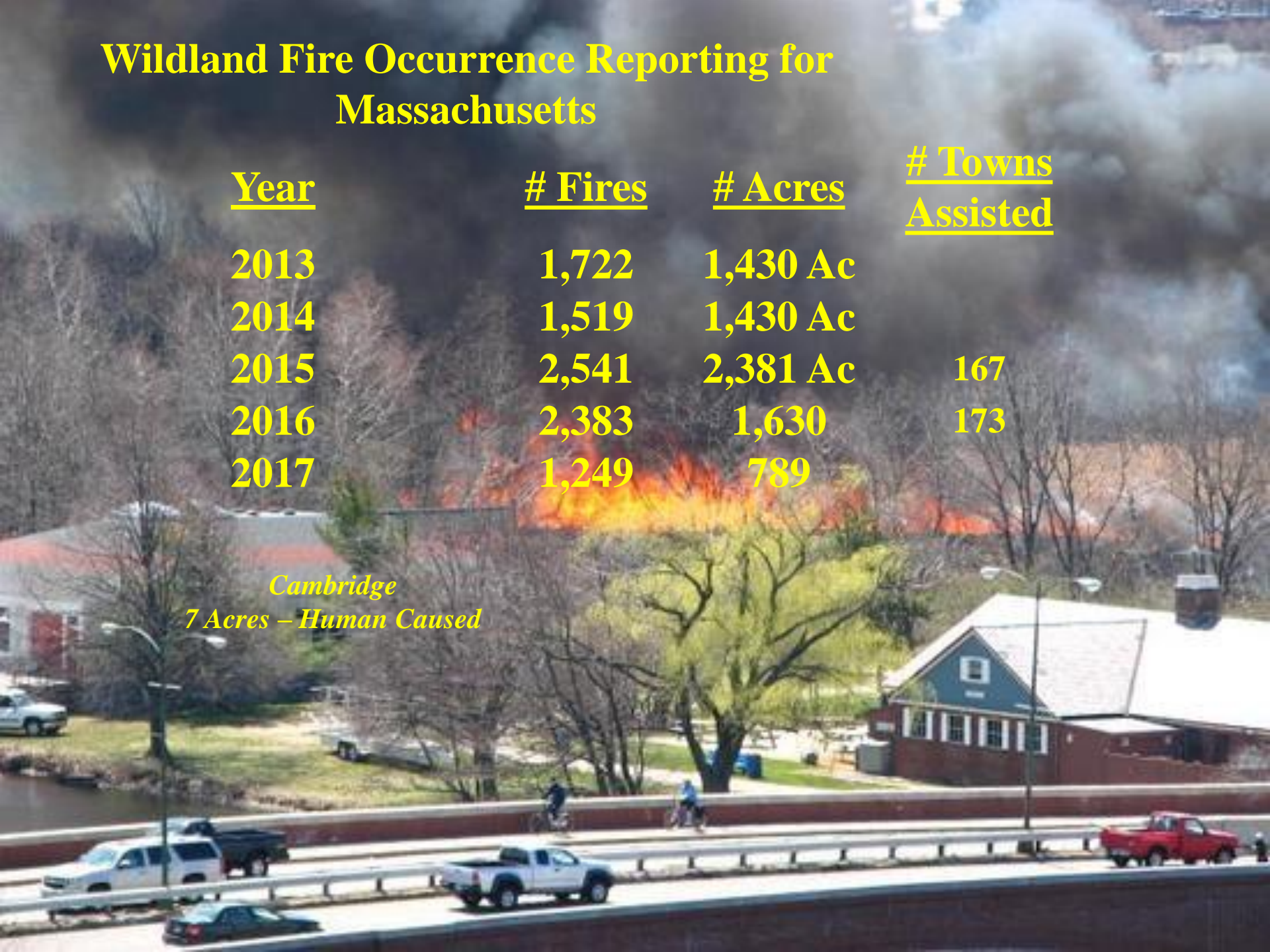
2001: Ware, 400 acres

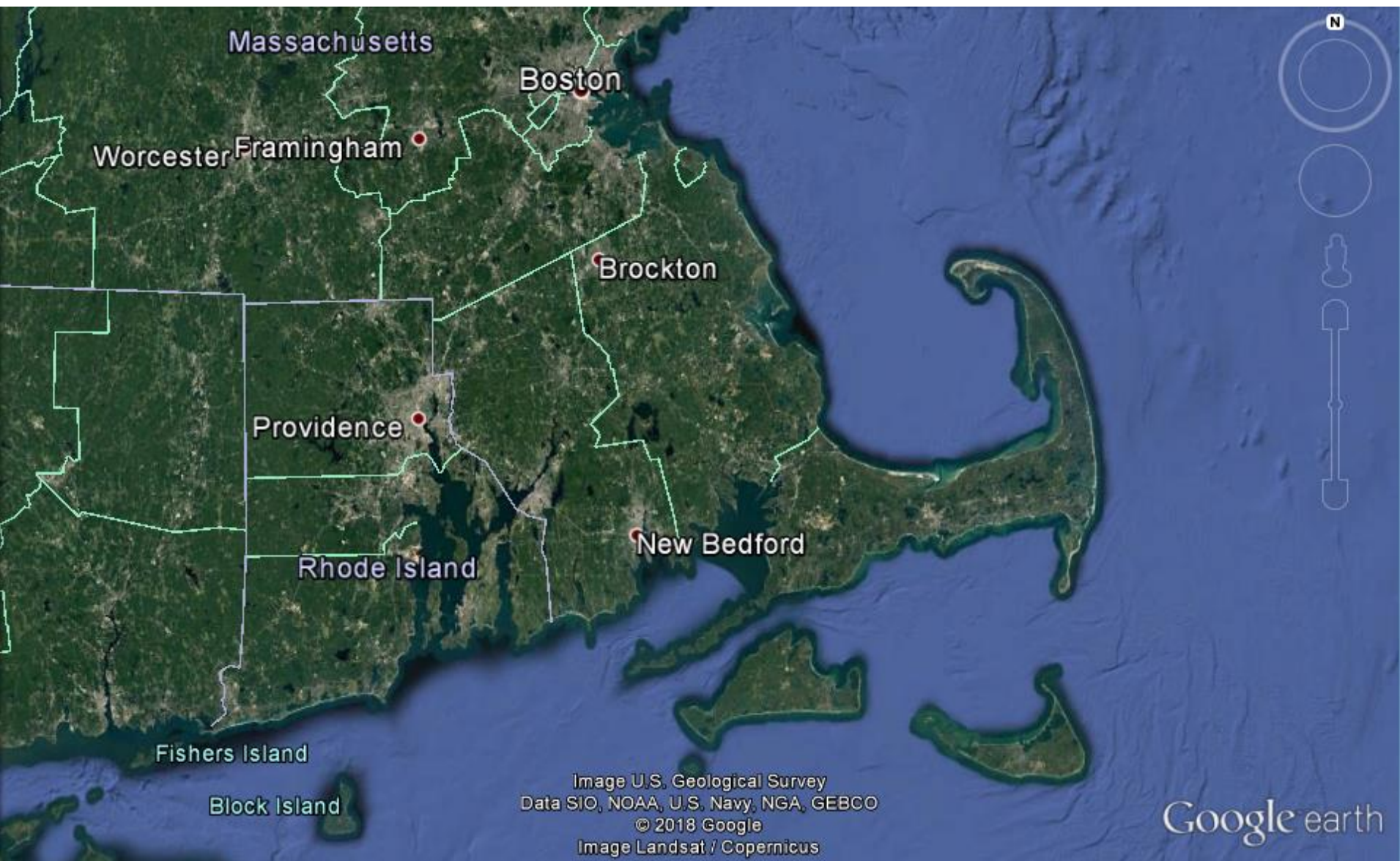
2010: Russell, 320 acres, Mt. Tekoa

Wildland Fire Occurrence Reporting for Massachusetts

<u>Year</u>	<u># Fires</u>	<u># Acres</u>	<u># Towns Assisted</u>
2013	1,722	1,430 Ac	
2014	1,519	1,430 Ac	
2015	2,541	2,381 Ac	167
2016	2,383	1,630	173
2017	1,249	789	

*Cambridge
7 Acres – Human Caused*





Massachusetts

Boston

Worcester Framingham

Brockton

Providence

Rhode Island

New Bedford

Fishers Island

Block Island

Image U.S. Geological Survey
Data SIO, NOAA, U.S. Navy, NGA, GEBCO
© 2018 Google
Image Landsat / Copernicus

Google earth

American Recovery and Reinvestment Act of 2009 (ARRA)

Southeast Mass Hazardous Fuels Mitigation and Ecosystem Restoration Project

- **DCR Awarded \$ 1.974 Million grant for project**
- **Duration of Project: July 2009 – November 2011**
- **Partnership with The Nature Conservancy**

Project Deliverables

- **Wildland Fire Training for Southeast – 150 FF's**
- **Prescribed Fire Plans DCR and Partnership Lands
1,800 acres**
- **Provide 6 Firewise Community Programs**
- **7 Community Wildfire Protection Plans**
- **Provide 20 Fire Prevention Programs**
- **400 Acres of Prescribed Fire Treatment – State**
- **200 Acres of Prescribed Fire Treatment - Partners**
- **600 Acres of Mechanical Fuels Treatment- State**

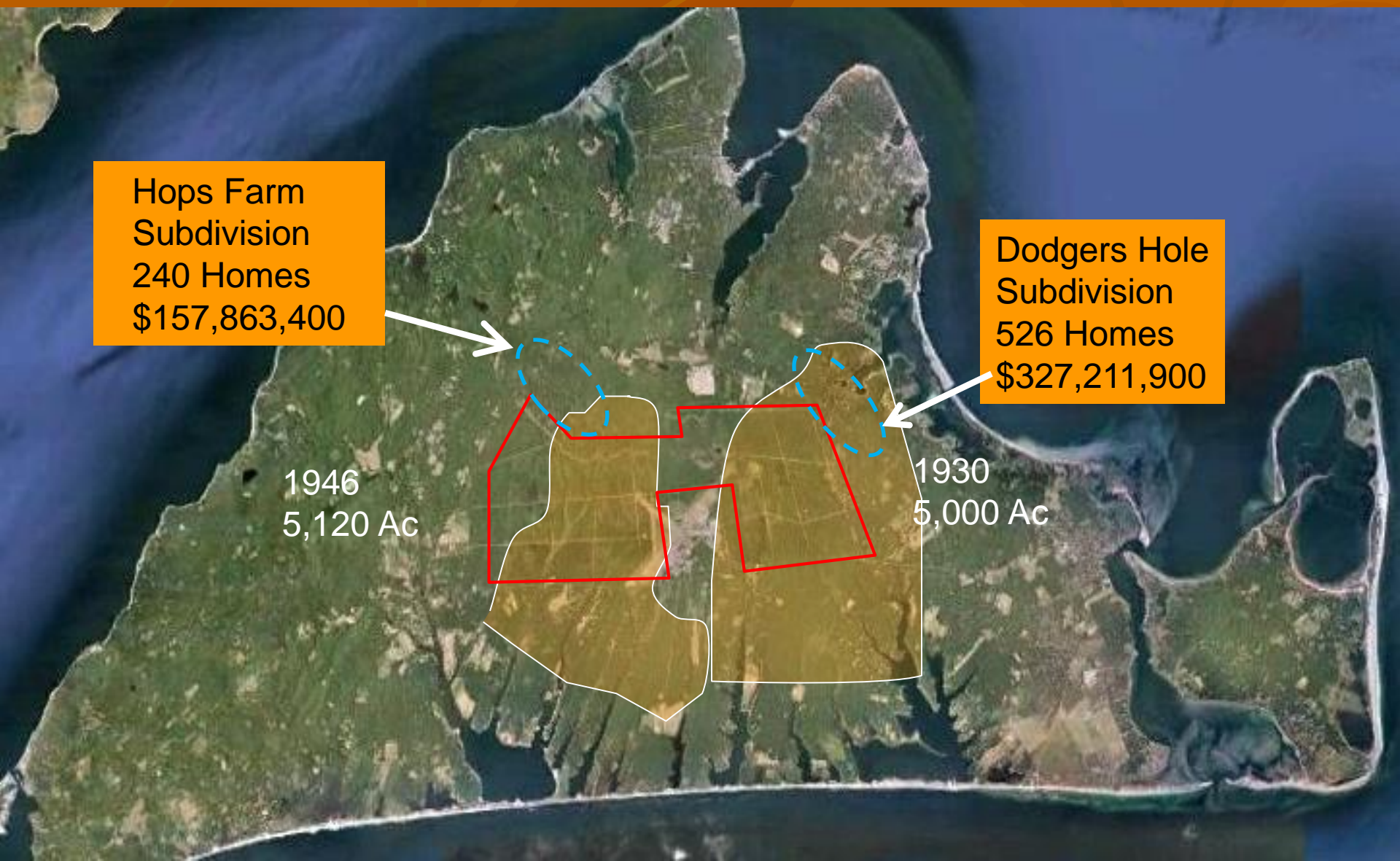
Vineyard Fire History

Hops Farm
Subdivision
240 Homes
\$157,863,400

Dodgers Hole
Subdivision
526 Homes
\$327,211,900

1946
5,120 Ac

1930
5,000 Ac





Plymouth Mast Road Subdivision



Jul 1, 2007

251 Homes
\$96,755,741

Community Wildfire Protection Plans / Firewise Programs

- 6 CWPP's
 - Landowners
 - Town Officials
 - Fire Departments
 - Stakeholders



Fire Behavior Potential

Fall Burn
Martha's Vineyard





STATE
1-3

DISTRICT PATROL



Mechanical Fuels Treatment

Product From
Mechanical Treatment



- Firefighter Safety
- Structure Protection
- Habitat Restoration

DCR Forest Fire Control Hazard Fuels Management 2010 MSSF Objectives:

- Hazard Fuels Reduction
- Ecosystem Restoration
- Fire Training



Fire Training

- DCR and local Fire Departments utilize Prescribed Burns for valuable fire training.
 - Fire Behavior
 - Tactics
 - Equipment
-
- *“95% of my firefighters have never seen the potential fire behavior out of this forest”.*

Plymouth Fire Chief

2009



Fire Training



**CL 415
Martha's
Vineyard**





RX Fire Success on Vineyard 2016



NECC Daily Situation Report			
PRESCRIBED FIRE TOTALS			
Monday December 5, 2016			
<u>Reporting Unit</u>	<u>Last Update</u>	<u>YTD RX Fire</u>	<u>YTD RX Acres</u>
CT-CTS		3	152
MA-CCP		0	0
MA-MAS		27	892.2
ME-ACP		1	75
ME-MES		18	128
NB		0	0.0
NH-NHS		2	5.0
NH-WMF		8	34.0
NL		1	212.4
NS		0	0.0
NY-NYS		13	351.8
PA-DWP		6	328
QC		0	0.0
RI-RIS		2	.5
USBIA-ER		0	0.0
USFWS-R5		10	126.7
VT-GMF		7	703
VT-VTS		4	62
Totals		102	2,816.2

Lessons Learned for Success

- Don't Be Afraid to Change Culture
- Always Be Increasing Capacity (Qualifications)
- Be OPEN, HONEST, TRANSPARENT with the public and partners.
- TELL YOUR STORY !!
- Plan Outside YOUR WORLD
- THINK Outside the Box
- Be FLEXIBLE, PATIENT, ADAPTABLE



Meeting Prescribed Fire Objectives Using Partnerships

- **Resource needs often require assistance from partnering agencies.**

Partnering agencies:

The Nature Conservancy

Mass Military Reservation

Mass Division of Fish and Wildlife

U.S. Fish and Wildlife Service

Municipal Fire Departments

NPS Cape Cod National Seashore

Trustees of Reservation

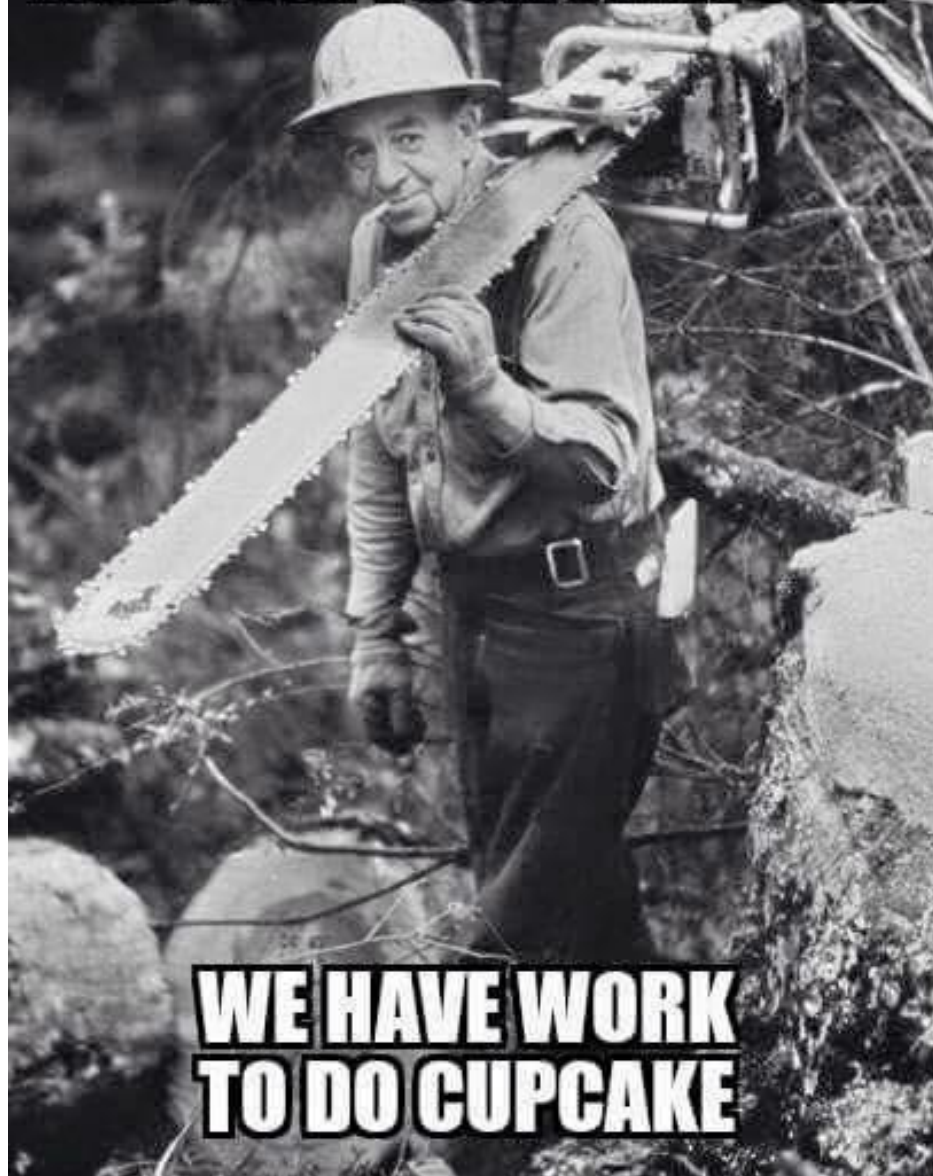


**WHERE?
WHEN?
HOW BIG?**

**PLYMOUTH
1957**

15,000 Acres in 12 HOURS

**PUT YOUR PHONE DOWN
AND PULL YOUR PANTS UP**



**WE HAVE WORK
TO DO CUPCAKE**

THANK YOU

QUESTIONS???

Dave Celino

Chief Forest Fire Warden

Massachusetts Dept of Conservation and
Recreation

David.Celino@state.ma.us

(508) 326-2403